

# Air Core Inductors for Surface Mounting

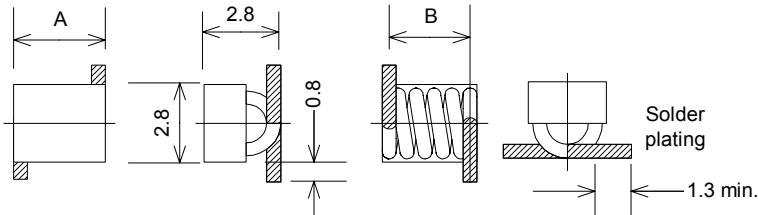
## TYPE : C3328A, C6328A



C3328A : A=3.3, B=2.9

C6328A : A=6.3, B=5.8

Frequency Range: 10~1000MHz  
 Inductance Range: 2.5nH~43nH  
 Temperature Coefficient: +50±100ppm/°C



- Winding direction : Clockwise.
- Tolerance for dimension must be as ±0.25mm unless otherwise specifies.

### Features

SMD type air core inductor  
 Tape/Reel packaging available for auto-insertion  
 High Q coils

### Specifications

Inductance		Q		Winding turns (Ts)		Self resonance frequency (GHz)	
Code	(nH)	C3328A	C6328A	C3328A	C6328A	C3328A	C6328A
2N5	2.5	145		1		6.0	
5N0	5.0	140		2		6.0	
8N0	8.0	140		3		5.0	
12N	12.5	140		4		3.0	
18N	18.5	135		5		2.5	
17N	17.5		100		6		3.4
22N	22.0		105		7		3.0
28N	28.0		105		8		2.6
35N	35.5		115		9		1.8
43N	43.0		110		10		1.5

Parts code

C3328A	12N	J
Type	Inductance code	Tolerance

Notes: 1. Measurement frequency of Inductance & Q: 150MHz.

### Inductance and Q test frequency

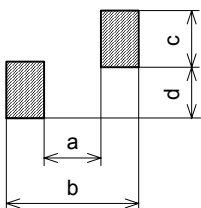
Tolerance	C3328A	C6328A
±10%(K)	2.5~5.0nH	—
±5%(J)	5.0~18.5nH	17.5~43nH
±2%(G)	8.0~18.5nH	17.5~43nH

### Inductance range

C3328A, C6328A
4.0A

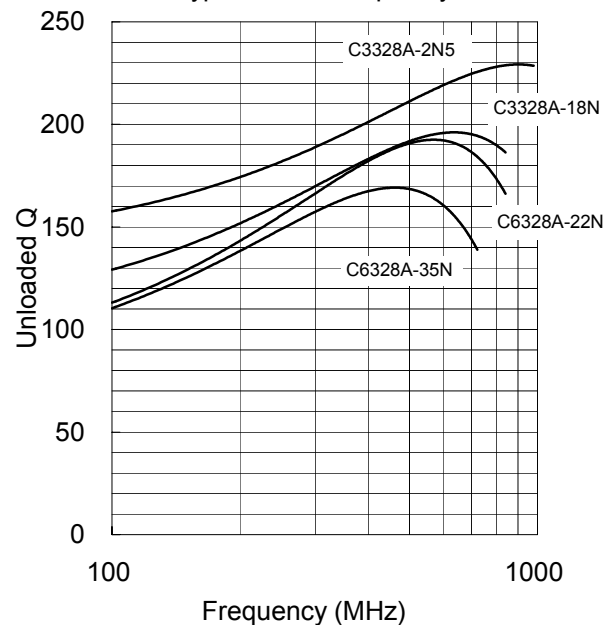
Notes: 1. Allowable DC current : A rise in temperature of inductor surface is within 20 °C.

### Recommended Land Pattern



Type	a	b	c	d
C3328A	1.6	4.2	3.3	2.8
C6328A	4.6	7.2	3.3	2.8

Typical Q vs Frequency



Notes: Graphs are based on typical values of each type, not specific values.