

Specification Status: Released

Maximum Electrical Ratings

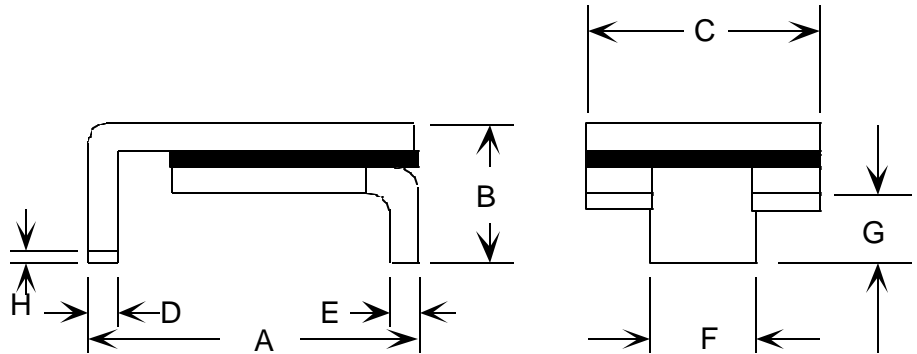
Operating Voltage / Interrupt Current

60V / 10A
12V / 60A
5V / 125A

Marking:



Manufacturer's Mark
Part Identification



Notes:

1. All metal surfaces are tin plated.
2. Devices cannot be wave soldered.
3. Drawing not to scale.

TABLE I. DIMENSIONS:

	A		B		C		D		E		F		G		H
	MIN	MAX	MIN	MAX	MIN	MAX	MIN	MAX	MIN	MAX	MIN	MAX	MIN	MAX	MIN
mm	6.7	7.9	--	3.2	4.8	5.4	0.5	0.8	0.5	0.8	2.1	2.5	0.7	1.3	0.4
in*	(0.265)	(0.31)	--	(0.125)	(0.19)	(0.21)	(0.022)	(0.028)	(0.022)	(0.028)	(0.085)	(0.095)	(0.03)	(0.05)	(0.017)

*Rounded off approximation

TABLE II. PERFORMANCE RATINGS:

I HOLD	CURRENT RATINGS						TIME TO TRIP	REFERENCE RESISTANCE VALUES (PRE REFLOW)		ONE-HOUR POST SOLDER RESISTANCE (260°C, 20 SEC)	TRIPPED-STATE POWER DISSIPATION	
	AMPS 20°C		AMPS AT 0°C		AMPS AT 20°C			AMPS AT 60°C				OHMS AT 20°C
HOLD	HOLD	TRIP	HOLD	TRIP	HOLD	TRIP	HOLD	TRIP	MIN	MAX	MAX	MAX
0.30	0.32	0.64	0.30	0.60	0.19	0.39	3		1.2	2.4	4.8	1.7

Reference Documents:

PS300, E.N. SMD 1.0x

Precedence:

This specification takes precedence over documents referenced herein.

Effectivity:

Reference documents shall be the issue in effect on the date of invitation for bid.

CAUTION:

Operation beyond the rated voltage or current may result in rupture, electrical arcing or flame.

Raychem Corporation

300 Constitution Drive
Menlo Park, CA 94025
800-227-4856
FAX 800-227-4866

Raychem
PolySwitch®
PTC Devices
Overcurrent Protection Device

PRODUCT: SMD030

DOCUMENT: SCD 21827
PCN: 068731
REV LETTER: H
REV DATE: JULY 11, 1998
PAGE NO.: 2 OF 2

TEST PROCEDURES AND REQUIREMENTS FOR SMD030

TEST NAME	PS300 SECTION	TEST CONDITIONS	ACCEPT/REJECT CRITERIA
Visual Mechanical	5.1.1	Verify dimensions and materials	Per SCD physical description
Resistance	5.4.1	Condition D, 20°C	Per SCD
Hold Current	5.4.6	30 minutes, 0.30A	No Trip
Time to Trip	5.4.7	8 amps, 20°C	Trip Time < 3 sec