



Ph Free

RoHS Compliant

Features

- Small and low profile
- Low insertion loss
- High selectivity
- High withstanding voltage

Applications

- GSM

How to Order

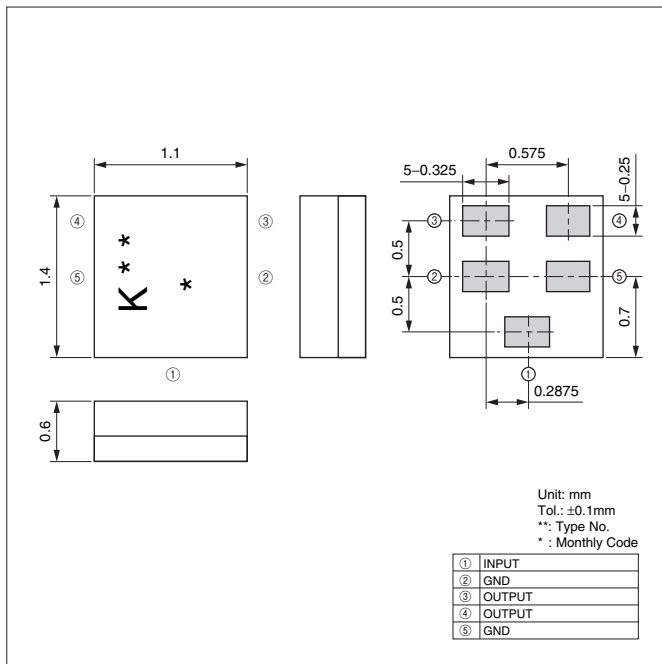
SF 14 - 0881 M 5 UB 50
① ② ③ ④ ⑤ ⑥ ⑦

- ① Type of Product (SAW Filter)
- ② Package Size
- ③ Frequency
- ④ Application
- ⑤ Terminals
- ⑥ Input/ Output Condition
- ⑦ Custom Specification (STD)

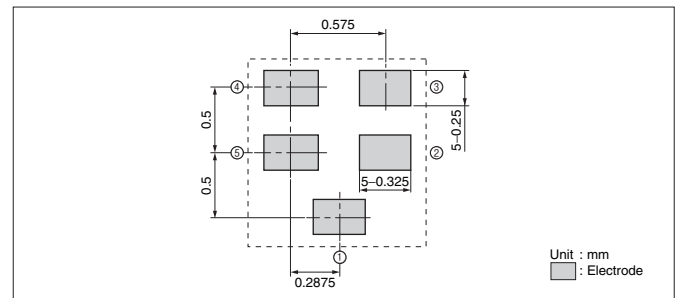
Specifications

Parts No.	Output Condition	Application	Pass Band Frequency	Insertion Loss (dB)	Pass Band Variation (dB)	VSW R	Absolute Rejection (dB)						Operating Temperature	Storage Temperature
							0MHz	840MHz	914MHz	940MHz	1025MHz	2880MHz		
SF14-0881M5UB50	Balanced	GSM850 Rx	869MHz - 894MHz	1.7 max.	1.5 max.	2.5 max.	0MHz 840MHz	840MHz 849MHz	914MHz 940MHz	940MHz 6000MHz			-30 to +85°C	-40 to +85°C
SF14-0942M5UB00		GSM900 Rx	925MHz - 960MHz	2.0 max.	1.5 max.	2.3 max.	0MHz 880MHz	880MHz 905MHz	905MHz 915MHz	980MHz 1025MHz	1025MHz 2880MHz	2880MHz 6000MHz		
SF14-1842M5UB00		GSM1800 Rx	1805MHz - 1880MHz	2.3 max.	1.5 max.	2.3 max.	0MHz 1300MHz	1300MHz 1705MHz	1705MHz 1785MHz	1920MHz 1980MHz	1980MHz 3000MHz	3000MHz 5000MHz		
SF14-1960M5UB50		GSM1900 Rx	1930MHz - 1990MHz	2.3 max.	1.5 max.	2.3 max.	0MHz 1830MHz	1830MHz 1910MHz	2010MHz 2070MHz	2070MHz 2150MHz	2150MHz 3000MHz	3000MHz 6000MHz		

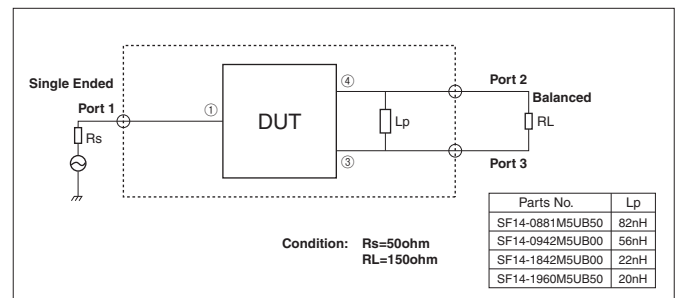
Dimensions



Recommended Land Pattern

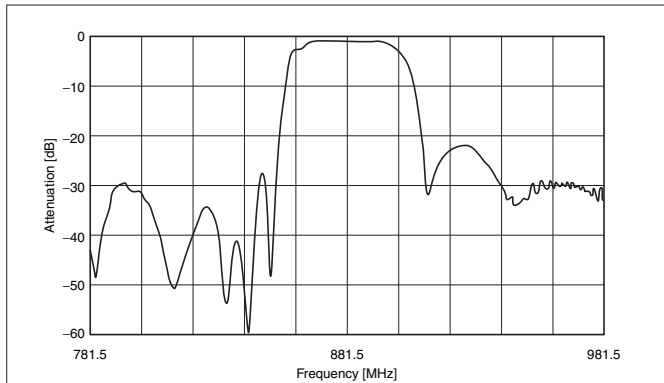


Test Circuit

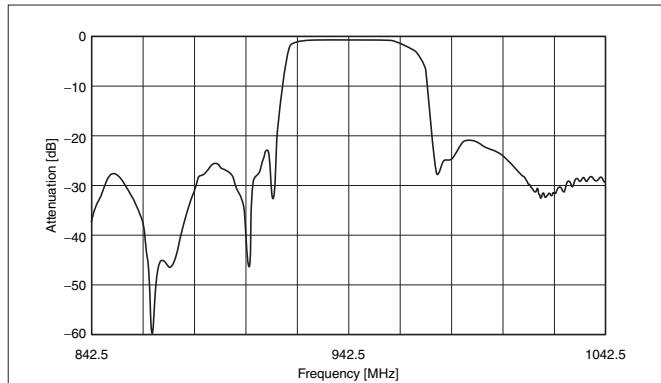


Characteristics

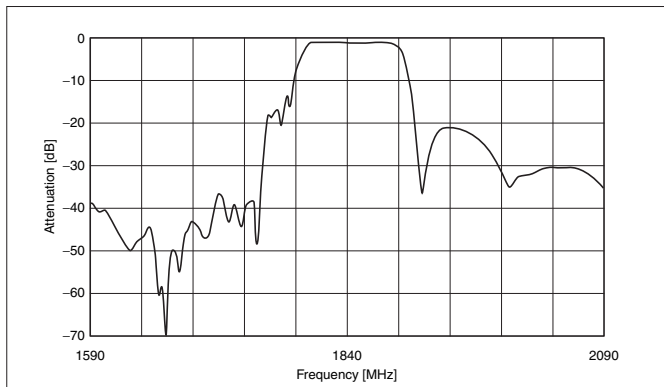
<GSM850> Parts No.: SF14-0881M5UB50



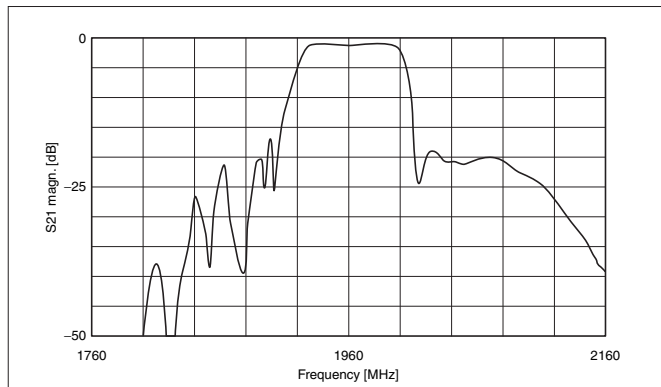
<GSM900> Parts No.: SF14-0942M5UB00



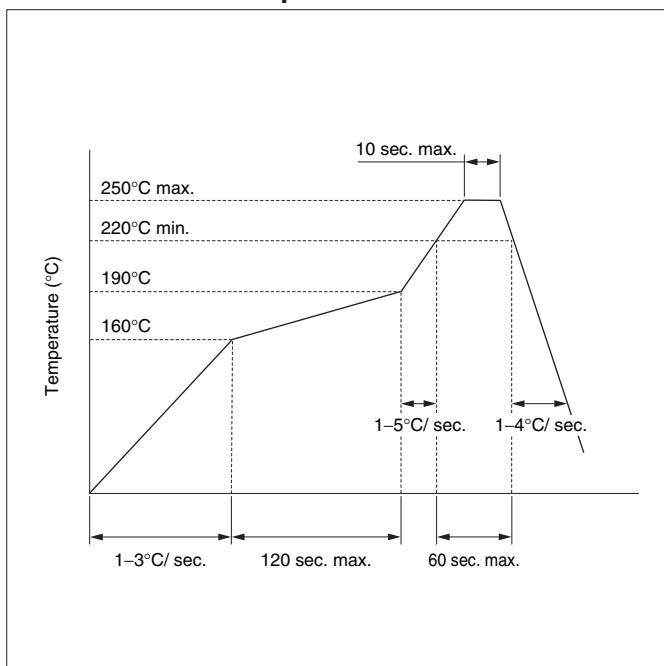
<GSM1800> Parts No.: SF14-1842M5UB00



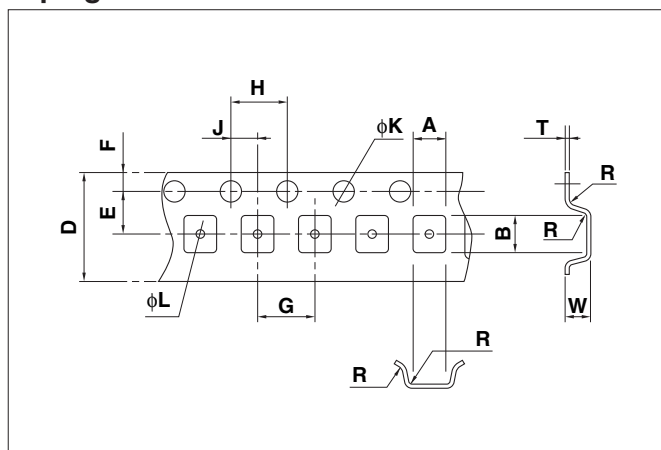
<GSM1900> Parts No.: SF14-1960M5UB50



Recommended Temperature Profile IR Reflow



Taping Dimensions



(Unit: mm)

Part	A	B	D	E	F
Dimension	1.4±0.1	1.7±0.1	8.0±0.2	3.5±0.05	1.75±0.1
Part	G	H	J	K	L
Dimension	4.0±0.1	4.0±0.1	2.0±0.05	1.5±0.1	0.5±0.05
Part	R	W	T		
Dimension	0.3 max.	0.8±0.1	0.2±0.05		