

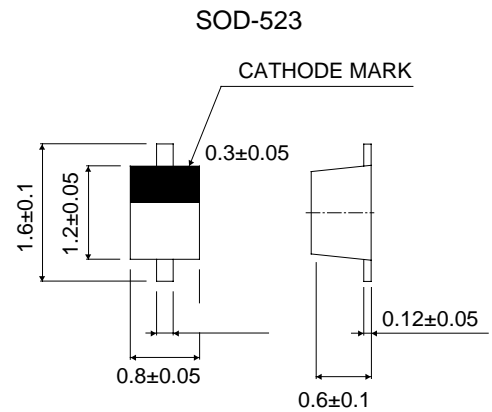
A suffix of "-C" specifies halogen & lead-free

**FEATURES**

- High speed switching
- High reliability
- RoHS Compliant Product

**MECHANICAL DATA**

- Extremely small surface mounting type. (EMD2)
- High speed. (trr=1.2ns type.)
- Silicon epitaxial planer



Dimensions in millimeters

**MAXIMUM RATINGS** ( $T_J = 25$  unless otherwise noted)

| Rating                    | Symbol      | Value       | Unit  |
|---------------------------|-------------|-------------|-------|
| Peak reverse voltage      | $V_{RM}$    | 90          | Volts |
| DC reverse voltage        | $V_R$       | 80          | Volts |
| Mean rectifying current   | $I_o$       | 100         | mA    |
| Peak forward current      | $I_{FM}$    | 200         | mA    |
| Surge current (1s)        | $I_{surge}$ | 500         | mA    |
| Junction Temperature      | $T_J$       | 125         |       |
| Storage Temperature Range | $T_{stg}$   | -55 to +125 |       |

**ELECTRICAL CHARACTERISTICS** ( $T_A = 25$  )

| Characteristic  | Symbol   | Min | Typ  | Max | Unit  |
|---|----------|-----|------|-----|-------|
| Forward voltage ( $I_F = 100mA$ )                                 | $V_F$    | -   | -    | 1.2 | Volts |
| Reverse current ( $V_R = 80V$ )                                   | $I_R$    | -   | -    | 0.1 | mA    |
| Capacitance between terminals ( $V_R = 0.5V, f = 1MHz$ )          | $C_T$    | -   | 0.27 | 3.0 | pF    |
| Reverse recovery time ( $V_R = 6V, I_F = 10mA, R_L = 100\Omega$ ) | $t_{rr}$ | -   | -    | 4   | ns    |

● **Electrical characteristic curves (Ta=25°C)**

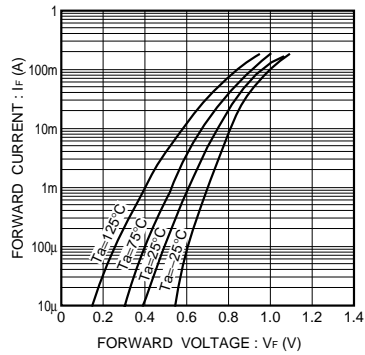


Fig.1 Forward characteristics

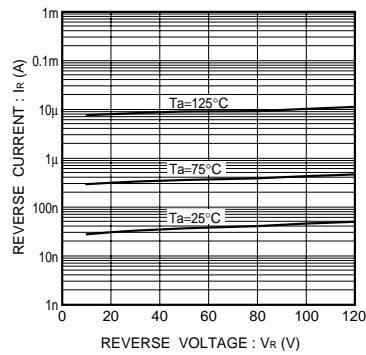


Fig.2 Reverse characteristics

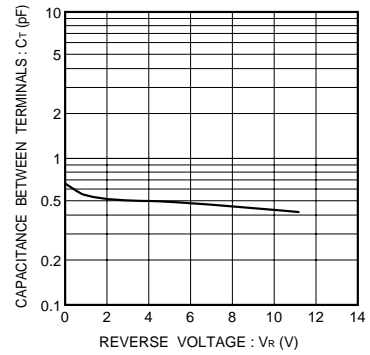


Fig.3 Capacitance between terminals

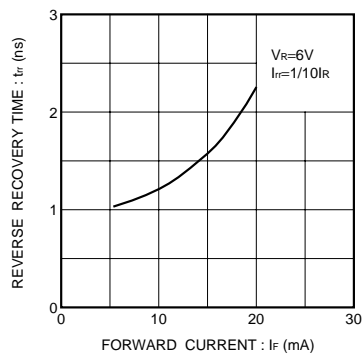


Fig.4 Reverse recovery time characteristics

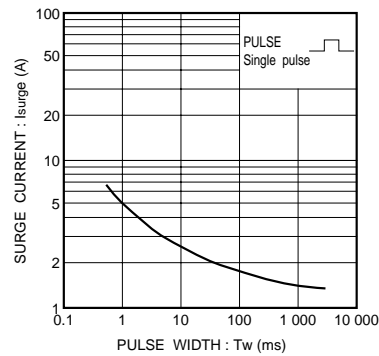


Fig.5 Surge current characteristics

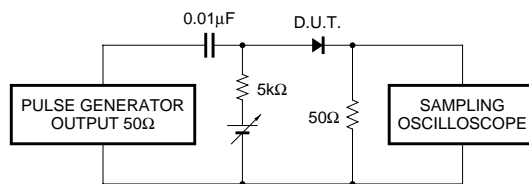


Fig.6 Reverse recovery time ( $t_r$ ) measurement circuit