

5/6-Pin CPs (FC Series)

The Sanyo 5/6-pin chip packs are small-sized packages that facilitate higher-density mounting. We have various packings that meet automatic mounting requirements.

Transistors for HF, LF Amp General-purpose Amp, Differential Amp Applications

Features

- * Composite version with two transistors contained in the CP heretofore in use, facilitating higher-density mounting
- * Ideally suited for differential amp applications because of excellent thermal equilibrium and complementary PNP and NPN Types available

Marking: Numeral for Type No. For PNP, (-) sign is omitted.

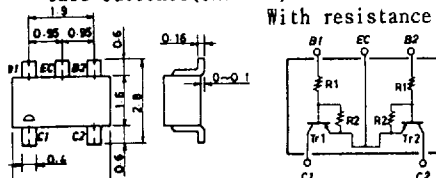
Type No (): Main use *: (LF general purpose Amp)	Pack- age	Absolute Maximum Ratings/Ta=25°C				Electrical Characteristics/Ta=25°C						Chips Used PNP / NPN			
		V _{CBO} (V)	V _{CEO} (V)	I _C (mA)	P _C lunit (mW)	h _{FE}	I _C / I _B (mA)	V _{CE(sat)} typ (V)	V _{CE(sat)} max (V)	f _T typ (MHz)					
											V _{CE} / I _C (V) (mA)		I _C / I _B (mA)		
*FC103(PNP)/FC104(NPN) *FC153(PNP/NPN)	CP5	55 55	50 50	150 150	200 200	6/1 6/1	160~600 160~600	50/5 50/5	(0.11) (0.11)	0.08 0.08	0.4 0.4	6/10 6/10	(180) (180)	200 200	A1622/C4211X2 A1622XC4211X1
(:) : PNP															
*FC101(PNP)/FC102(NPN) FC117(PNP)(High current SW) FC118(NPN)(nt SW) FC119(NPN)(HF general) FC120(NPN) amp *FC122(PNP/NPN) FC139(NPN)(High hFE) FC140(NPN)(High speed SW) *FC141(NPN) FC149(NPN)(High hFE) FC150(PNP)(High hFE) (NPN) FC151(PNP)(HF general) FC152(NPN)(HF general)	CP6	55 20 20 30 25 55 60 40 55 30 30 60 20 25	50 15 15 20 20 50 50 15 50 25 25 50 15 15	150 500 500 300 30 150 100 200 150 100 150 100 50 50	200 200 200 200 200 200 200 200 200 200 200 200 200 200 200	6/1 2/10 2/10 6/1 6/1 6/1 5/10 1/10 6/1 5/1 5/10 10/5 10/5	160~600 160~560 160~560 80~200 160~600 800~3200 90~240 160~600 500~1500 500~1200 800~3200 20~100 60~200	50/5 5/0.5 5/0.5 5/0.5 50/5 50/1 10/1 50/5 50/1 50/1 50/1 - -	(0.11) 15m 15m - (0.11) 0.1 0.13 0.08 0.15 (0.15) - -	0.08 35m 30m - 0.08 0.5 0.25 0.4 0.3 (0.3) - -	0.4 0.4 0.4 - 0.4 0.5 0.25 0.4 0.3 (0.3) - -	6/10 2/50 2/50 6/1 6/4 6/10 10/10 10/10 6/10 10/10 10/10 10/5 10/5 10/10	(180) 400 300 320 750 (180) 200 750 200 210 210 200 3G 3G	200 400 400 320 750 200 200 200 210 210 200 3G 3G 3G	A1622/C4211X2 A1745X2 C4555X2 C2814X2 C3142X2 A1781/C4639X1 C3689X2 C4452X2 C4639X2 A1813X2 A1813X1 C4413X1 A1669X2 C4270X2

Transistors with Resistance

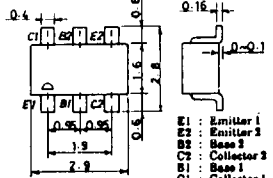
Marking: Numeral for Type No. For PNP, (-) sign is omitted.

Type No PNP / NPN	Pac- kage	Absolute Maximum Ratings/Ta=25°C				Electrical Characteristics/Ta=25°C						Resist- ance (KΩ)	Chip Used PNP / NPN
		V _{CEO} VCBO (V)	I _C (mA)	P _C lunit (mW)	h _{FE}	I _C / I _B (mA)	I _B (mA)	V _{CE(sat)} typ (V)					
									V _{CE} / I _C (V) (mA)	I _C / I _B (mA)			
FC105 / FC106 FC109 / FC110 FC113 / FC114 FC123 / FC124 FC127 / FC128 FC131 / FC132 FC135 / FC136 FC147 / FC148	CP6	50	100	200	5	5	50	5	0.25	0.1	0.3	47/47	A1341/C3395X2
5	50					10	0.5	22/22	A1342/C3396X2				
FC111 / FC112 FC115 / FC116 FC125 / FC126 FC129 / FC130 FC133 / FC134 FC137 / FC138 FC121 / FC144 FC142 / FC143 FC145 / FC146	CP5	50	100	200	5	5	50	5	0.25	0.1	0.3	47/47	A1341/C3395X2
5	50					10	0.5	22/22	A1342/C3396X2				

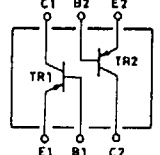
Case Outlines (unit:mm) SANYO:CP5



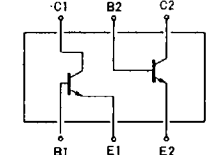
SANYO:CP6



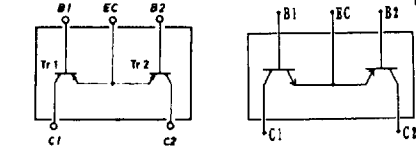
FC101/FC102, FC117, FC118, FC139, FC149.



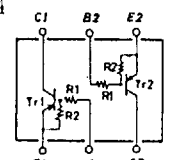
FC140.



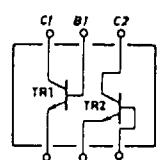
FC103(PNP), FC104(NPN) FC153



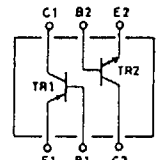
With resistance



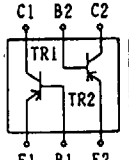
FC119, FC120, FC141.



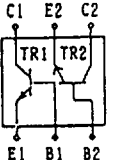
FC122, FC150



FC151.



FC152.



These specifications are subject to change without notice.

Next page.