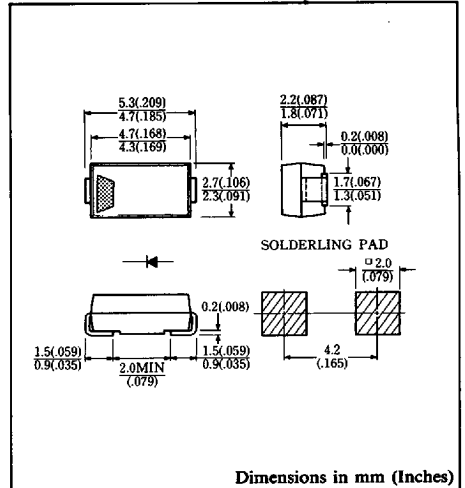


FEATURES

- Surface Mounting Device
- Low Forward Voltage Drop
- Low Power Loss, High Efficiency
- High Surge Capability
- 20 Volts through 100 Volts Types Available
- Packaged in 12mm Tape and Reel
- Not Rolling During Assembly



Dimensions in mm (Inches)

Approx. Net Weight: 0.06 Grams

MAXIMUM RATINGS

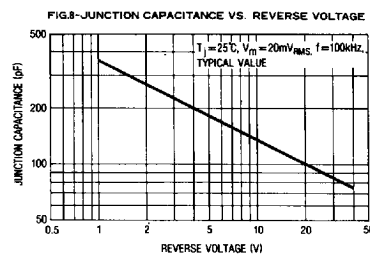
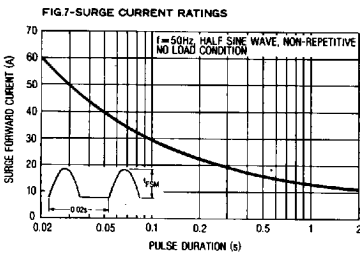
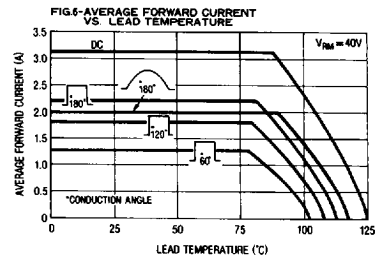
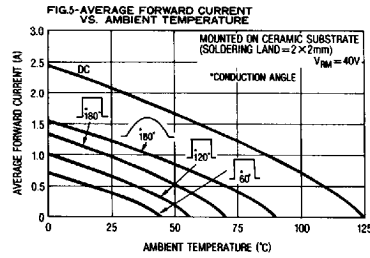
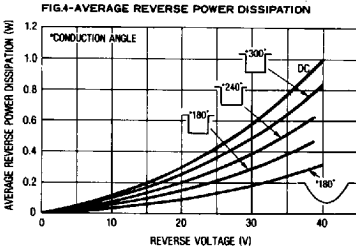
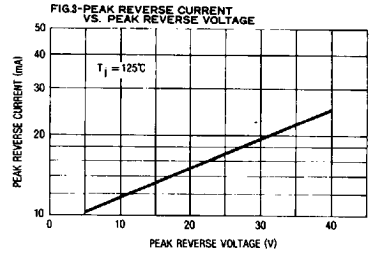
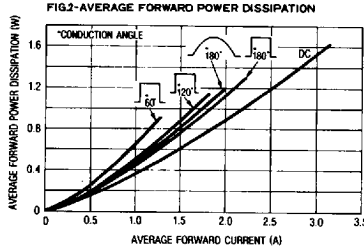
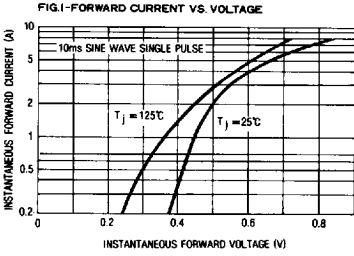
| Voltage Rating | Type Symbol | EC20QS04 | | Unit |
|---|--------------|--|------------|------|
| Repetitive Peak Reverse Voltage | V_{RRM} | 40 | | V |
| Electrical Rating | Symbol | Condition | Rating | Unit |
| Average Rectified Output Current (resistive load) | I_O | 180° rectangular wave conduction $T_l^* = 81^\circ\text{C}$ | 2.2 | A |
| | | 180° sinusoidal wave conduction $T_l^* = 89^\circ\text{C}$ | 2.0 | |
| RMS Forward Current | $I_{F(RMS)}$ | | 3.14 | A |
| Peak One-cycle Forward Surge Current | I_{FSM} | 50Hz half sine wave, non-repetitive | 60 | A |
| Operating Junction Temperature Range | T_{jw} | | -40 to 125 | °C |
| Storage Temperature Range | T_{stg} | | -40 to 125 | °C |

ELECTRICAL & THERMAL CHARACTERISTICS

| Characteristics | Symbol | Test Condition | Max. | Unit |
|----------------------|---------------|---|------|------|
| Peak Forward Voltage | V_{FM} | $I_{FM} = 2.0\text{A}$, $T_j = 25^\circ\text{C}$ | 0.50 | V |
| Peak Reverse Current | I_{RM} | $V_{RM} = V_{RRM}$, $T_j = 25^\circ\text{C}$ | 3.0 | mA |
| Thermal Resistance | $R_{th(j-l)}$ | Junction to Lead | 23 | °C/W |

* T_l = Lead Temperature

6615123 0001829 084



6615123 0001830 8T6