

- Addresses
- Contact Us
- Products Conforming to RoHS Directive

Surge Absorbers Varistor	LC EMI Filter Thermistor	Antennas Langasite	Common Mode Filter
-----------------------------	-----------------------------	-----------------------	--------------------

LC EMI Filter > LFA24, LFH24, LCA24			
LFA10, LFA20, LFA30	LFA 24, LFH24, LCA 24	LFA34	LFB30 rated current 1A series
LFB20, LFB30 rated current 2A series	LZA05, LZA10	Applications	Packaging
Mounting Recommendations			

3 TERMINAL ARRAY CHIP TYPE LC EMI FILTER LFA24, LFH24, LCA24 SERIES

Our "LFA24, LFH24, LCA24" series are extremely efficient EMI filter arrays with monolithic construction of inductor and capacitor elements.

They are 3 terminal arrays of 4 LC circuits in a 0805 or 0804 package, suitable for noise reduction on high frequency signal lines, due to steep and wide-band insertion loss characteristics. LFA24 and LFH24 series have distributed element circuits.

Features

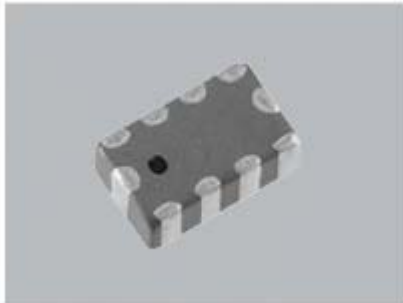
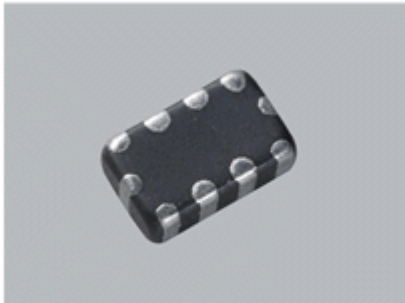
- . Array of 4 LC filters, suitable for high density circuit lines.
- . Ultra miniature and low profile type
- . Steep insertion loss characteristics and removes noise over a wide range.
- . LFH24 series are smaller. (0804 size)
- . LCA24 series have smaller capacitance

Applications

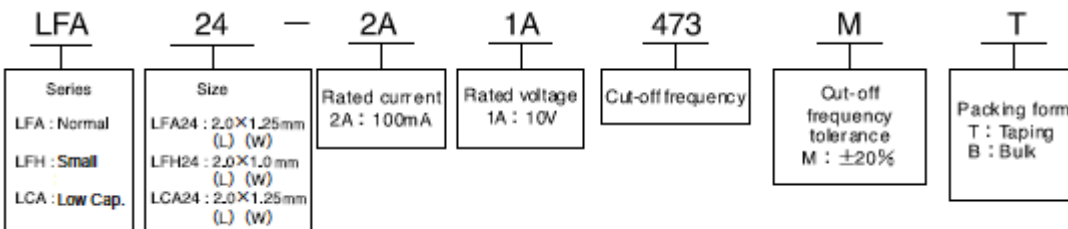
- . For digital AV equipment and cellular phone.

LFA24, LFH24 series

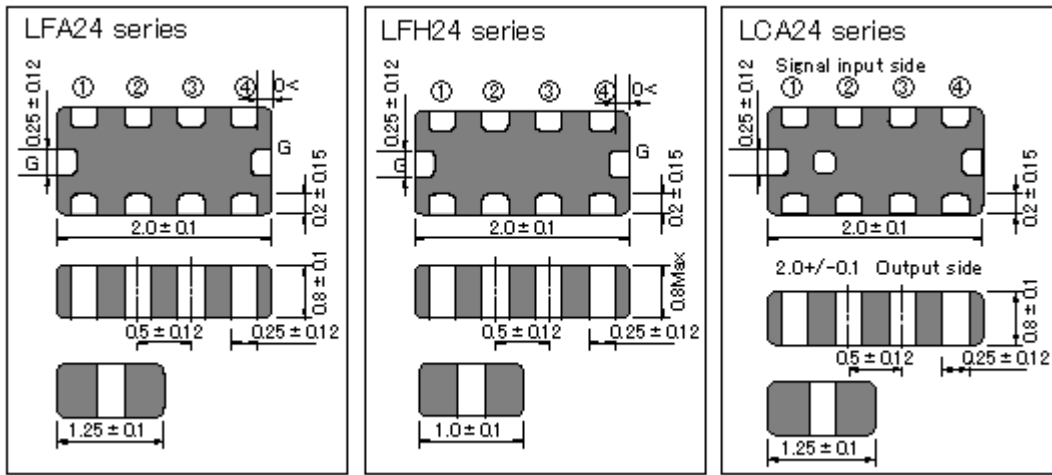
LCA24 series



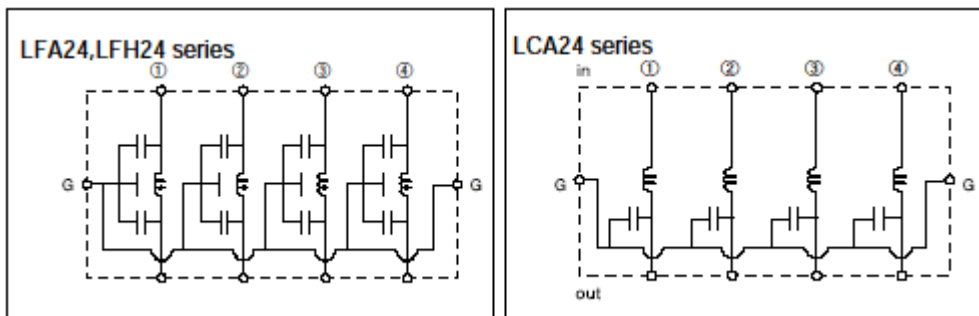
Part number system



Dimensions(mm)



Equivalent circuits

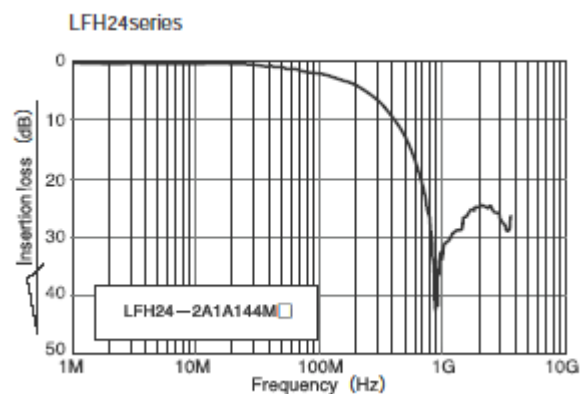
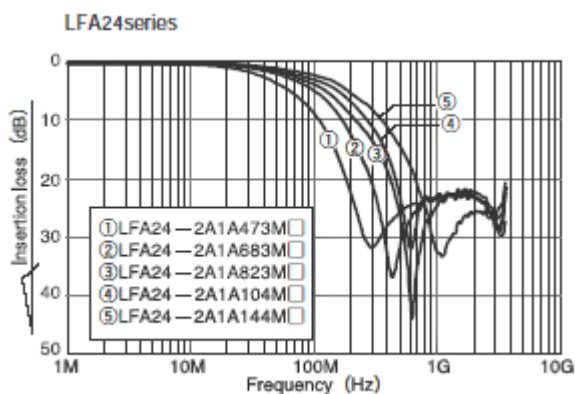


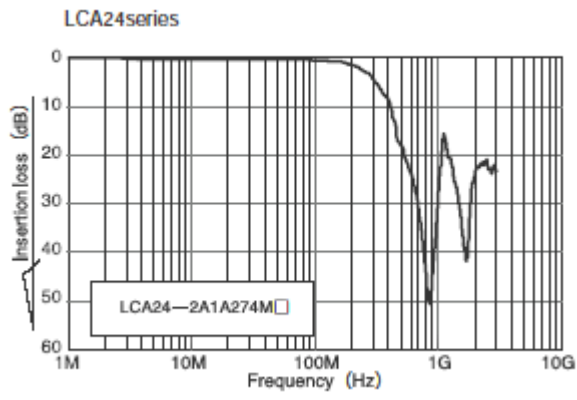
Part number list

Part number	Cut-off frequency	Cut-off frequency tolerance	Rated voltage	Rated current	Insulation Resistance	Operating Temp. range
LFA24-2A1A473M*	47MHz	±20%	10V	100mA	10MΩmin	-40°C+85°C
LFA24-2A1A683M*	68MHz					
LFA24-2A1A823M*	82MHz					
LFA24-2A1A104M*	100MHz					
LFA24-2A1A144M*	140MHz					
new LCA24-2A1A274M*	270MHz					

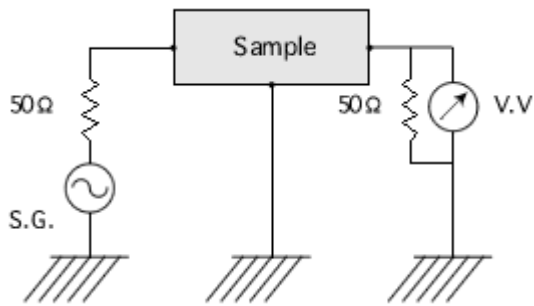
* : "T" stands for taping package and "B " stands for bulk package.

Insertion loss (Reference)





Test circuit



[ΔTo LC EMI Filter Top](#) [ΔTo Site Top](#)